



Harvard Street Neighborhood Health Center Campus

An urban health hub that empowers neighbors to live healthy lives in our community.



THE COMMUNITY
BUILDERS

isgenuity

MASS.

Harvard Street Neighborhood Health Center

Who We Are

For over 50 years, the Harvard Street Neighborhood Health Center has been **a beacon of health and hope**, providing first-class care to all—regardless of a person's ability to pay.

Founded in 1969 by the Boston Department of Health and Hospitals as a well-baby clinic, HSNHC serves as a primary health resource to community through the delivery of comprehensive, patient-centered medical care.

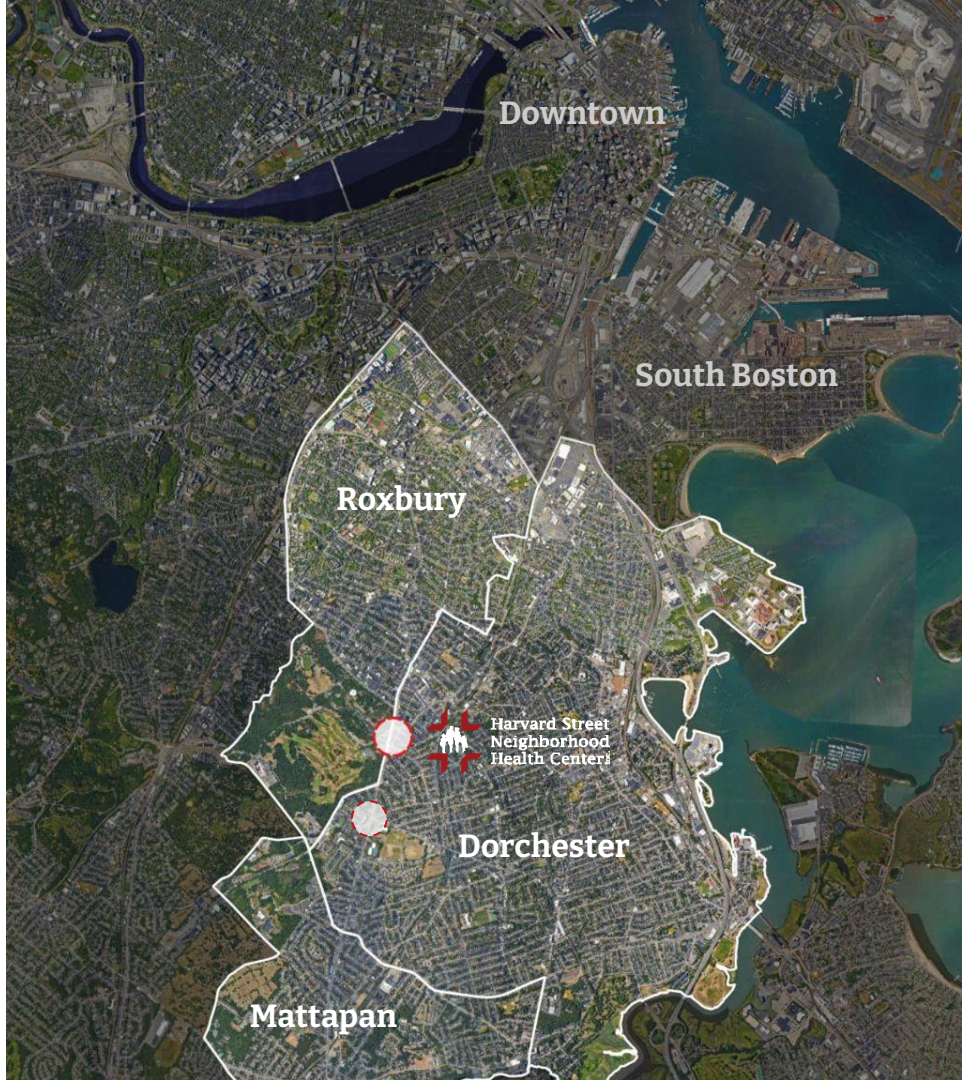


Harvard Street Neighborhood Health Center

Who We Serve

Located directly adjacent to Franklin Park - at the heart of Dorchester, Roxbury, and Mattapan - **HSNHC delivers essential care to vibrant culturally diverse and majority minority communities**

Harvard Street proudly serves a racially, ethnically and socioeconomically diverse patient population from Boston's inner-city neighborhoods. A vast majority of those we serve are low-income and thus impacted by the Social Determinants of Health, such as housing instability, food insecurity, and lack of transportation or access to technology.



Harvard Street Neighborhood Health Center

Who We Serve

Annually, HSNHC helps over

10,000

People live healthier lives.

88% are Black / African American (40% identify as Hispanic)

84% Reported living below 100% of FPL

74% have Mass Health as Insurance Coverage and

10% are Uninsured

Harvard Street proudly serves a racially, ethnically and socioeconomically diverse patient population from Boston's inner-city neighborhoods. A vast majority of those we serve are low-income and thus impacted by the Social Determinants of Health, such as housing instability, food insecurity, and lack of transportation or access to technology.



HSNHC Programs at a Glance



Family Medicine



Pharmacy



Adolescent
Clinic



Cancer
Screening



Insurance
Assistance



Women's Health



Dental Clinic



Laboratory



Family
Planning



Neighborhood
Trauma Team



Eye Care



Nutrition



Podiatry



SNAP & WIC



Infectious
Diseases

632 Blue Hill Ave location



Behavioral Health



Veterans
Outreach Center



Food Pantry

895 Blue Hill Ave location

The Challenge

An Aging facility



But our building has come to
the end of its useful life.

Built more than a century ago,
our aging facility limits our
ability to meet the evolving
health needs of today.

The Challenge

An Aging facility



A car dealership when acquired and renovated in 1976, the building **hinders** HSNHC's ability to deliver high quality, dignified care to patients.

The Challenge

An Aging Facility

Not Purpose-Built



The current facility was once a building for industrial use, and later converted into what now is HSNHC.

HSNHC is deserving of spaces that are designed, built to support the mission and values of the organization, centering health and human dignity.

Institutional Feel



Patient-facing spaces can be confusing to navigate and lack access to daylight and fresh air.

Warm, welcoming spaces and visual and physical connection to nature improve patient experience and signal high quality care.

Crowded Staff Spaces



Existing staff conditions at HSNHC are over capacity, dim, and located sub-street level.

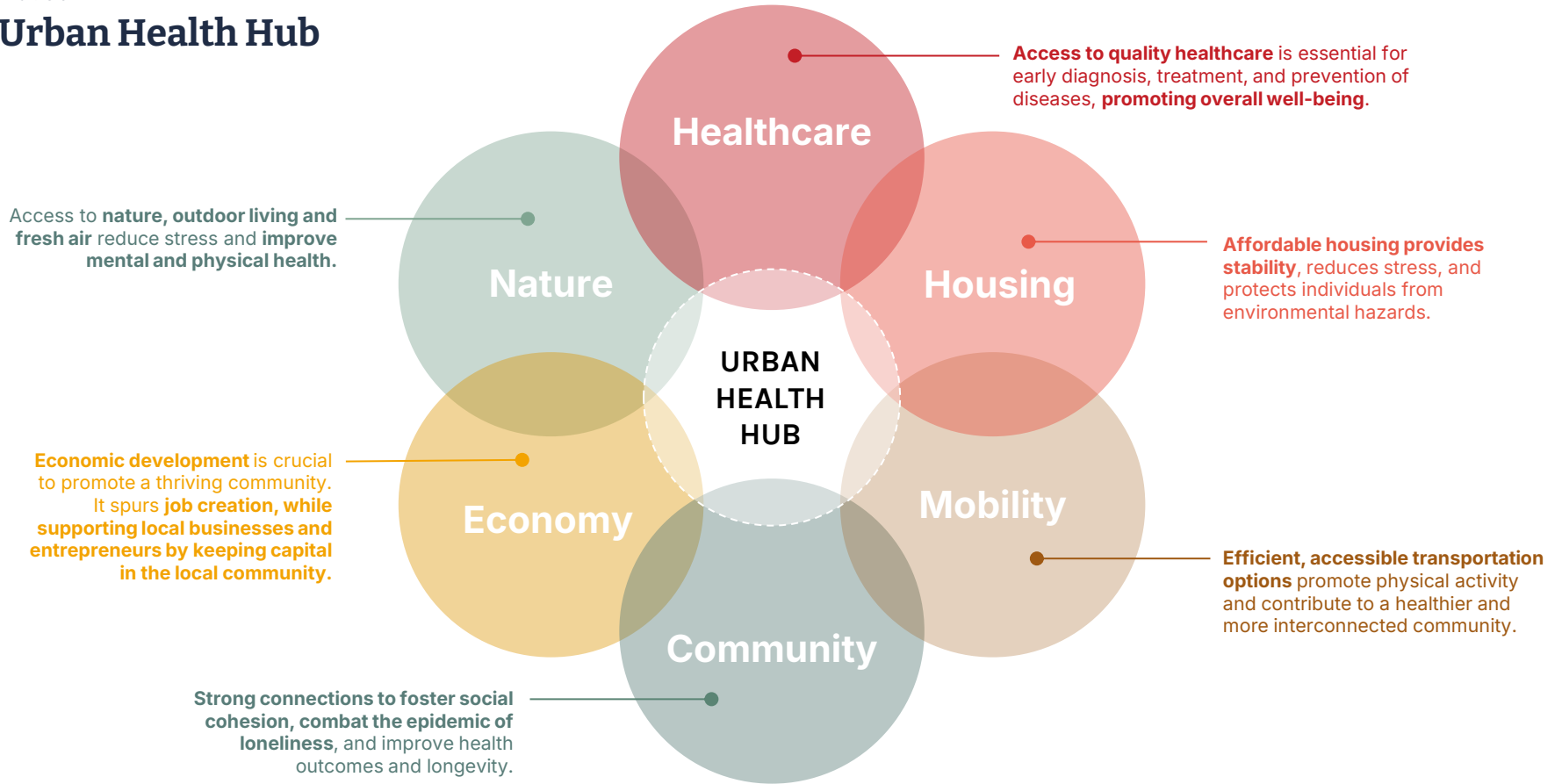
Workspaces at HSNHC should support staff to live the mission of the clinic and promote healthy living and working.

Harvard Street Neighborhood Health Center

Our Vision

We aim to create an **urban health hub** that empowers neighbors to live **healthy lives in the community.**

Urban Health Hub



The opportunity

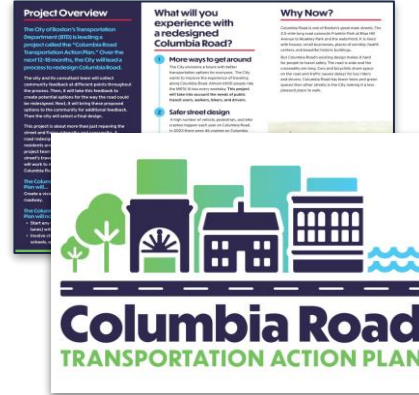
Change is Now



Franklin Park Action Plan



Blue Hill Ave
Transportation Action
Plan



Columbia Road
Transportation Action
Plan



The Vision

Existing Community Assets

White Stadium

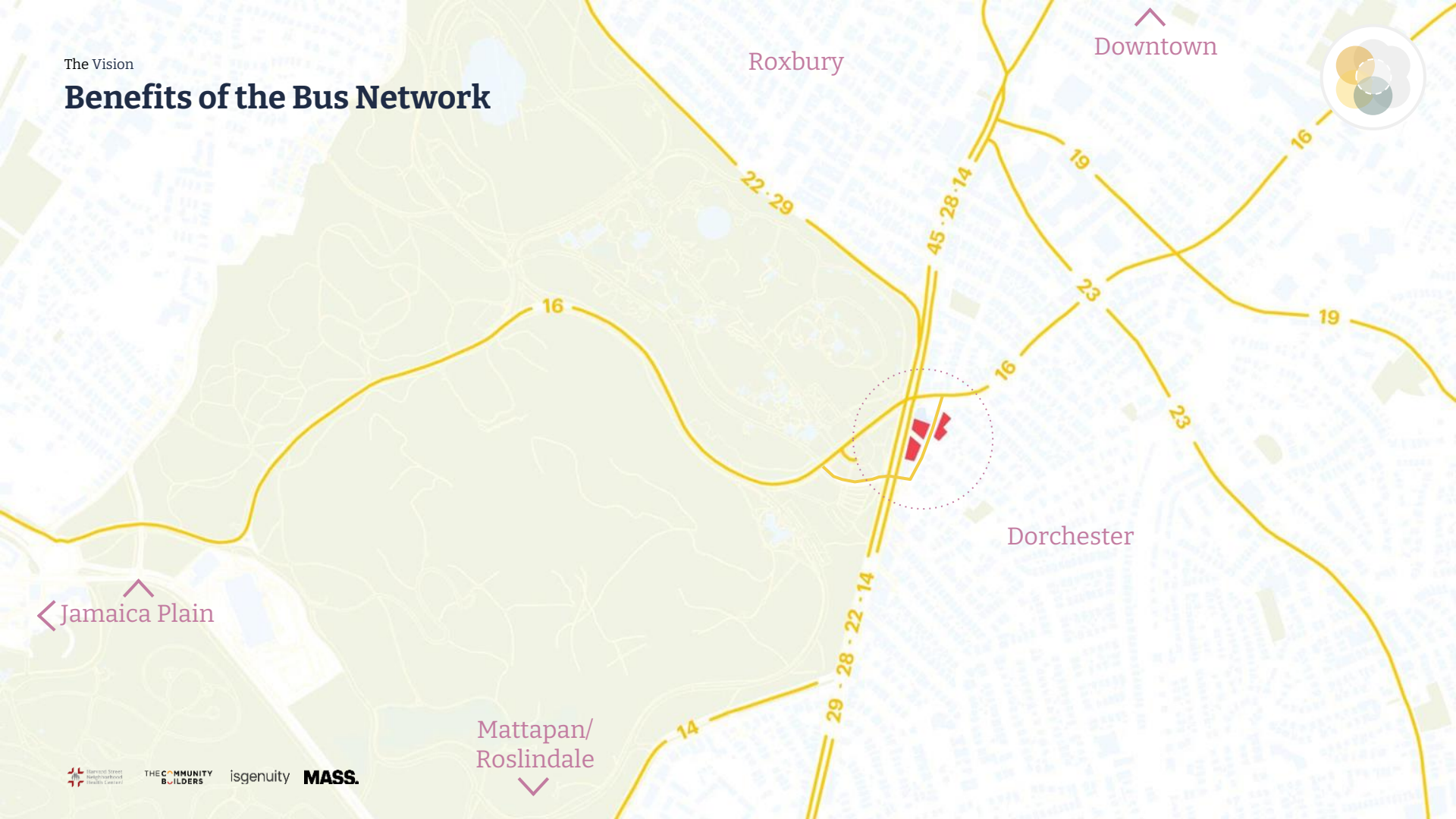
Franklin Park Zoo

William J. Devine Golf Course



The Vision

Benefits of the Bus Network



Roxbury

Downtown



16

22 · 29

45 · 28 · 14

19

16

23

19

16

23

Dorchester

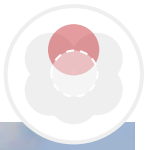
Jamaica Plain

Mattapan/
Roslindale

14

29 · 28 · 22 · 14

New Health Center



Building Highlights

- :: 49,000 Square Feet
- :: 11 Dental Chairs (up from 7)
- :: 18 Exam Chairs (up from 10)
- :: Community Room
- :: Behavioral Health at Main Clinic

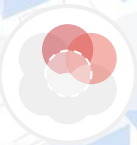
Benefits

- Increase Services by 20%
- Improve Patient Outcomes
- Warm Handoffs to Behavioral Health
- Passive House Design
- Safer for Patients & Staff

An Urban Health Hub

Healthcare + Housing

How can we reimagine equitable and inclusive urban living?



New, purpose-built neighborhood health center as the catalyst for addressing health through a holistic approach.

Introduce **affordable housing** along Blue Hill Avenue to increase housing stability for lower income families.

Affordable housing **co-located** with ground floor community health care to **foster resilient communities**.

1. **Resiliency:** colocating health and housing promotes more resilient living environments.
2. **Holistic Care:** Residents receive comprehensive care and a more holistic approach to well-being.
3. **Enhanced Community Support:** fosters social cohesion and stronger support networks.
4. **Cost Efficiency:** more effective use of resources.
5. **Reduced Homelessness:** providing stable housing alongside necessary health services supports long-term stability.

HOUSING + HEALTH

Colocating Health and Housing programs considers the wellbeing of the community holistically and impacts the social determinants of health.

An Urban Health Hub

Nature + Community



A Pedestrian Greenway

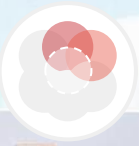
Access to green space is a proven tool for getting and staying healthy. A new gateway to Franklin Park extends access to landscaped green space through our site, connecting the neighborhood to the park.

A Replicable Model



An Urban Health Hub

Healthcare + Housing



THE COMMUNITY BUILDERS

isgenuity

MASS.

An Urban Health Hub

View to Franklin Park



Franklin Park
Hospitals and
Health Center

THE COMMUNITY
MEMBERS

Isogenity

MASS.

The Vision - An Urban Health Hub

View from Franklin Park



The Vision

An Urban Health Hub at Blue Hill Ave and Columbia Road



Harvard Street
Neighborhood
Health Center

THE COMMUNITY
BUILDERS

isgenuity

MASS.